

bitez.

Optional Material Swatches

Remark : Due to factors such as computer monitor and pixel, the colors of the swatches PDF file may be slightly different from the colors of the real swatches. Please refer to the real swatches received.

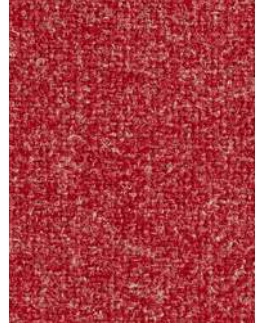
Fabric Swatches: Imported Camira Hemp (60% Wool, 40% Hemp)



Hp03
Gorse



Hp08
Pollen



Hp12
Alec



Hp16
Dew



Hp18
Dale



Hp19
Acre



Hp20
Trough



Hp23
Barn



Hp30
Sickle

Fabric C Swatches: B Fabric (75% Wool, 22% Nylon, 3% Conductive Fiber)



B201
Black Gray



B203
Green Gray



B204
Red Gray



B206
Blue Gray



B208
Rose Red

Fabric C Swatches: T Fabric (85% Wool, 12% Nylon, 3% Conductive Fiber)



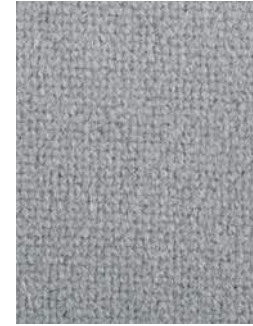
T501
Scarlet



T502
Black



T505
Dark Gray



T506
Light Gray



T507
Fuchsia



T508
Light Blue



T509
Dark Green



T512
Orange

Fabric C Swatches: Small Jacquard (100% Wool)



Q701
Plain White



Q702
Camel



Q703
Light Gray



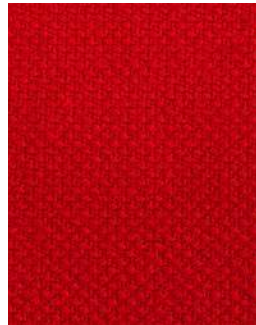
Q704
Light Blue



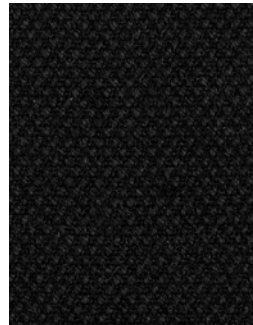
Q705
Dark Gray



Q706
Orange



Q707
Scarlet



Q708
Black



9013CU
Red

Fabric C Swatches: Gabriel–Medley (100% Polyester)



60003
Ash



60004
Dark Grey



60167
Light Grey



60999
Black



61002
Melange



62002
Yellow



63013
Orange



64019
Red



68002
Straw



68005
Dark Green

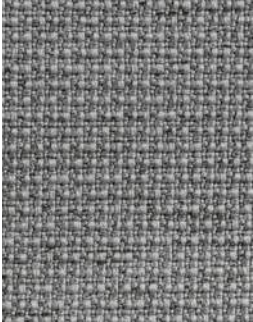


68114
Light Green

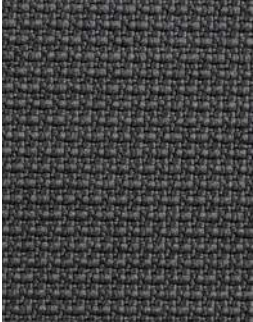
Fabric C Swatches: Gabriel–Mozart (100% Polyester)



60186
Sage Green



60188
Grey



60189
Navy Blue



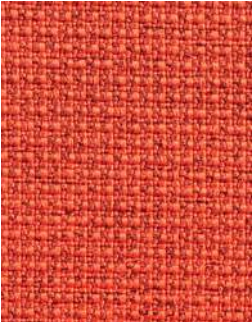
61163
Melange



61206
Sand



62061
Earthy Yellow



63076
Red Brown



64135
Pink



64194
Purple



66010
Light Blue



66159
Sky Blue



68144
Green

Fabric C Swatches: Imported Cashmere Fabric (95% Wool, 5% Nylon)



B-9008W
Green



B-9012W
Blue



B-9013W
Red



B-9014W
Emerald



B-9015W
Purple



B-9016W
Grey



B-9017W
Orange

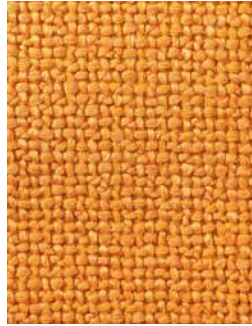


B-9018W
Rose

Fabric C Swatches: Hemp (18% Linen, 40% Acrylic,
15% Polyester, 27% Cotton)



3335Y-COL.01
Offwhite



3335Y-COL.09
Orange



3335Y-COL.18
Golden Green



3335Y-COL.21
Light Gray



3335Y-COL.22
Dark Gray



3335Y-COL.204
Deep Forest



3335Y-COL.306A
Khaki

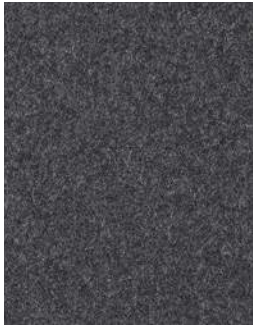


3335Y-COL.313A
Sky Blue

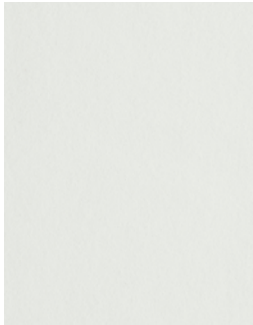
Fabric B Swatches: Cashmere Fabric (80% Wool、 20% Nylon
/ 60% Wool、 30% Polyester、 10% Viscose)



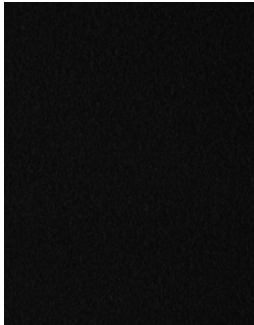
B-9001
Wheat



B-9002
Darkish



B-9010
White



B-9011
Black

Fabric B Swatches: Technical Fabric (95% Polyester, 5% Spandex)



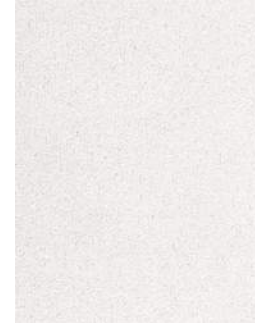
CARTIER-94
Gray



DIOR-02
White



FENDI-01
Off-White



FENDI-01DS
Beige



FENDI-02DS
Silver Grey



FENDI-54
Brown



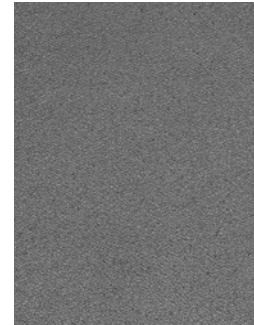
FENDI-54DS
Caramel



FENDI-67
Mint green



FENDI-69
Olive Green



FENDI-94DS
Gray

Fabric A Swatches: Elastron-Ascot (95% Polyester, 5% Acrylic)



0592.1044
Nata



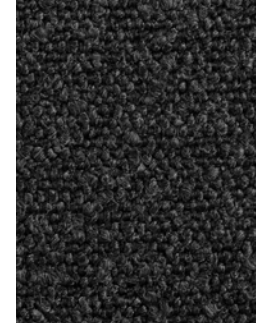
0592.1047
Pearl



0592.1048
Toffee



0592.1049
Brick



0592.1051
Black



0592.1054
Mouse



0592.1055
Taupe



0592.1059
Atlantic



0592.1064
Graphite

Fabric A Swatches: Elastron–Boston (100% Polyester)



0438.0708
Sky



0438.0709
Light Grey



0438.0710
Ash



0438.0711
Ocean



0438.0719
Forest



0438.0720
Water Green



0438.0721
Green



0438.0722
Turquoise



0438.0723
Pink

Fabric A Swatches: Elastron–Brooklyn (94% Polyester, 6% Nylon)



0626.0007
Water Green



0626.0204
Camel



0626.0240
Belge



0626.0391
Mud



0626.0508
Rose



0626.0752
Jeans



0626.0855
Pearl



0626.3520
Bottle

Leather Swatches: Nubuck Aniline Leather



7127002
Earthy Yellow



CRM05
Tan



CRM06
Light Taupe



CRM11
Baby Blue



CRM13
Vintage Blue

Leather Swatches: Italian Premium Leather



618
Orange



624
Dark Blue



627
Brown



630
Light Grey



646
Dark Brown



666
Beige



671
Grey



704
Dark Red

Leather Swatches: Waxy Leather



A-9
Dark Burgundy



A-10
Black



A-11
Dark Olive Green



A-60
Caramel



A-80
Dark Tan



KS2195
Tan

Leather Swatches: Semi-aniline Leather



TR202
Coffee



KS948
Tan



KS2095
Black



KS2119
Brown



KS2699
Yellow



PS-4
Camel



YY1221
White



YY1239
Red

Leather Swatches: Corrected Leather



B-7007
Brown



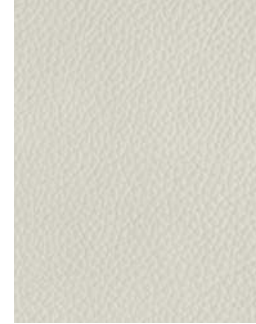
SC438
Red



SC8816
Black



WJ630
Coffee



XXL6027
White

Solid Wood & Plywood



Natural Walnut



Natural Oak



Natural Ash



Natural Beech



Oiled Ash



Rosewood Veneer



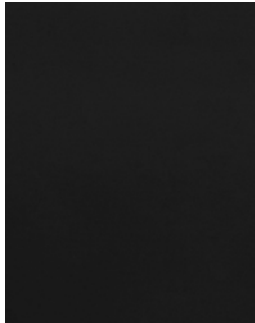
Walnut Veneer



Oak Veneer



Ash Wood Walnut Stain



Fully Closed Matt Lacquer

bitez.